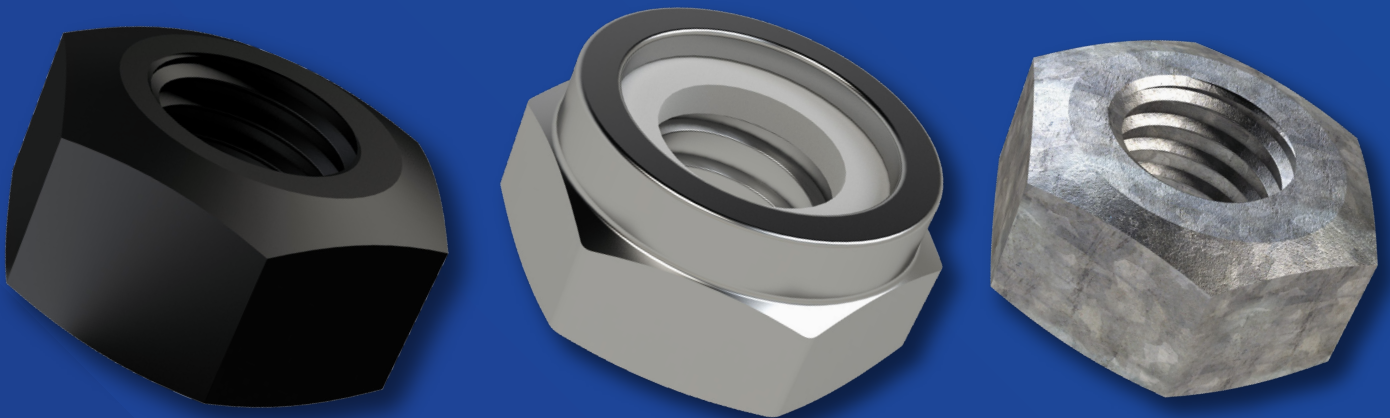


Build it better with  
**BREMICK®**

# NUTS

BUILDING PRODUCT  
INFORMATION  
SHEET


---



# Contents

1.1 Product class .....	3
1.2 Product name .....	3
1.3 Product description and its intended use .....	3
1.4 Product identifier (if applicable) .....	3
1.5 Place manufactured (New Zealand or overseas) .....	3
1.6 Relevant Building Code clauses .....	3
1.7 Statement of how the building product is expected to contribute to compliance .....	4
1.8 Limitations on the use of the building product .....	5
1.9 Design requirements that would support the appropriate use of the building product .....	5
1.10 Installation requirements .....	6
1.11 Maintenance requirements .....	6
1.12 Building Act 2004 section 26 compliance .....	6
<b>Appendix: Bremick Product Codes .....</b>	<b>7</b>

## 1.1 Product class

**Class 1: Batch or mass-produced products** 

## 1.2 Product name

Product Category - Bremick Nuts

## 1.3 Product description and its intended use

Nuts for interior and exterior use in all NZS 3604 Exposure Zones and environments, subject to type, size and material selection.

## 1.4 Product identifier (if applicable)

Refer to Appendix for unique product listing

## 1.5 Place manufactured (New Zealand or overseas)

Manufactured overseas to strict Bremick specifications.

## 1.6 Relevant Building Code clauses

B1 Structure	Performance clauses B1.3.1, B1.3.2, B1.3.3 and B1.3.4
B2 Durability	Performance clauses B2.3.1 a) and B2.3.1 b)
C3 Fire Affecting Area Beyond the Source	Performance clause C3.7 a)
C6 Structural Stability	Performance clause C6.2
F2 Hazardous Building Materials	Performance clause F2.3.1

## 1.7 Statement of how the building product is expected to contribute to compliance

### **B1 Structure - B1.3.1, B1.3.2, B1.3.3 and B1.3.4**

- *Fixings/fasteners contribute to the structural integrity of building elements. Compliance demonstrated through design to NZS 3604 and Specific Engineered Design.*

#### Compliance Pathway

##### Buildings up to 3 storeys ≤10m in height

Compliance demonstrated through design to NZS 3604.

##### Buildings >10m in height

Specific Engineered Design. Refer also to BPIR Product Review - Structural Bolt Assemblies.

### **B2 Durability**

- *B2.3.1 a) 50 years - where used to fix structural or difficult to replace elements*
- *B2.3.1 b) 15 years - where used to fix non-structural or moderately difficult to replace building elements*

*304 Stainless steel, 316 Stainless steel and Hot-dipped galvanised nuts (to AS/NZS 4680) achieve 15 and 50 year durability, subject to Exposure Zone and Environment. Other finishes suitable for interior use only with the exception of corrosive internal environments.*

#### Compliance Pathway

##### Buildings up to 3 storeys ≤10m in height

Compliance demonstrated through material selection to NZS 3604:

- Table 4.1 - Protection required for steel fixings and fastenings excluding nails and screws
- Table 4.2 - Galvanising of steel components other than nails and screws

##### Galvanising to:

AS/NZS 4680 - Hot-dip galvanised (zinc) coatings on fabricated ferrous articles  
600g/m<sup>2</sup> average

*Type 304 stainless steel is sufficient to comply with NZBC requirements, but may have surface rust. 316 Stainless steel exceeds the requirements of the NZBC.*

##### Buildings >10m in height

Specific Engineered Design. Also refer to BPIR Product Review - Structural Bolt Assemblies.

### **C3 Fire Affecting Area Beyond the Source - C3.7 a)**

- *Nuts are manufactured from non-combustible materials, as defined in NZBC C/AS2.*

#### Compliance Pathway

##### NZBC C/AS2:

*External wall cladding systems for multi-level buildings with a building height  $\geq 25$  m*

*5.8.4 The entire external wall cladding system shall be:*

*a) **Non-combustible** or limited combustible materials*

Non-combustible is defined in NZBC C/AS2 as:

*Material either -*

*a) composed entirely of glass, concrete, steel, brick/block, ceramic tile, or aluminium; or*

*b) classified as non-combustible when tested to AS 1530.1; or*

*c) classified as A1 in accordance with BS EN 13501-1.*

### **C6 Structural Stability - C6.2**

- *Nuts are manufactured from non-combustible materials, as defined in NZBC C/AS2.*

#### Compliance Pathway

Fixings/fasteners contribute to the structural integrity of building elements/structural systems.

##### Buildings up to 3 storeys $\leq 10$ m in height

Compliance demonstrated through design to NZS 3604.

##### Buildings $> 10$ m in height

Specific Engineered Design. Also refer to BPIR Product Review - Structural Bolt Assemblies.

### **F2 Hazardous Building Materials - F2.3.1**

- *Nuts are manufactured from non-toxic / safe to handle materials.*

## 1.8 Limitations on the use of the building product

- For interior and exterior use in all NZS 3604 Exposure Zones and Wind Zones subject to material selection.

## 1.9 Design requirements that would support the appropriate use of the building product

- Buildings designed to NZS 3604 Timber-framed buildings or Specific Engineered Design.

## 1.10 Installation requirements

---

1. Select a nut that matches the thread type and diameter of the threaded fastener i.e. bolt, set screw or threaded rod
2. Apply the nut to the threaded fastener and using an appropriate sized socket or wrench rotate the nut until sufficient clamping force is obtained or specified torque achieved. DO NOT OVER TIGHTEN
3. For removal reverse the above

## 1.11 Maintenance requirements

---

- Stainless steel - Periodic cleaning in accordance with Bremick guidance
- Periodically inspect the fastener for corrosion

## 1.12 Building Act 2004 section 26 compliance

Is the building product/building product line subject to warning or ban under [section 26 of the Building Act 2004](#)?

---

No

<b>ACORN NUT SS304</b>
NACM40500N2
NACM40800N2
NACM41000N2
NACM41200N2
NACM60600N2
NACM60800N2
NACM61000N2
NACM61200N2
NACM61600N2
<b>HEX COUPLING NUT</b>
NHCMG120402
NHCMG160502
NHCMZ080252
NHCMZ100402
NHCMZ120402
<b>HEX NUT ISO METRIC</b>
N46MG0600P6
N46MG0800P6
N46MG1000N2
N46MG1000P6
N46MG1200N2
N46MG1200P2
N46MG1200P6
N46MG1600N2
N46MG1600P2
N46MG1600P6
N46MG2000N2
N46MG2000P2
N46MG2000P6
N46MG2400N2
N46MG2400P2
N46MG3000N2
N46MP1200N2
N46MP1200P2
N46MP1600P2
N46MP2000N2
N46MP2400N2
N46MZ0300P2
N46MZ0400P2
N46MZ0400P6
N46MZ0500P2

N46MZ0500P6
N46MZ0600N2
N46MZ0600P2
N46MZ0600P6
N46MZ0800N2
N46MZ0800P2
N46MZ0800P6
N46MZ1000N2
N46MZ1000P2
N46MZ1000P4
N46MZ1000P6
N46MZ10PLA6
N46MZ1200P2
N46MZ1200P6
N46MZ1600N2
N46MZ1600P2
N46MZ2000N2
<b>HEX NUT SS304/316</b>
NHHC40500N2
NHHC40600N2
NHHC40800N2
NHHC60500N2
NHHC60600N2
NHHC60800N2
NHHC61200N2
NHHM40300N2
NHHM40400N2
NHHM40500N2
NHHM40600N2
NHHM40800N2
NHHM41000N2
NHHM41200N2
NHHM41600N2
NHHM42000N2
NHHM60400N2
NHHM60500N2
NHHM60600N2
NHHM60800N2
NHHM61000N2
NHHM61200N2
NHHM61600N2
NHHM62000N2

NHHM62400N2
NHHM63000N2
<b>HEX NUT UNC/F G5</b>
N50CZ1000N2
<b>HEX NUT UNC/F G8</b>
N80CP1200P2
N80CP2200P2
N80CP2400P2
N80CZ1600P2
N80CZ2000P2
N80FZ1200P2
<b>LOCK NUT SS316</b>
NLKM61000N2
<b>NYLOC NUT - IMPERIAL</b>
NNYCZ0500P2
NNYCZ0600P2
NNYCZ0800P2
NNYCZ1000P2
NNYCZ1100P2
NNYCZ1200P2
NNYCZ1600P2
NNYCZ2000P2
NNYCZ2400P2
NNYFZ0600P2
NNYFZ0800P2
NNYFZ1000P2
NNYFZ1100P2
NNYFZ1200P2
NNYFZ1400P2
NNYFZ1600P2
NNYFZ2000P2
NNYFZ2200P2
NNYFZ2412T2
NNYFZ2414T2
NNYFZ3000P2
NNYFZ3600P2
NNYWZ1200P2
<b>NYLOC NUT - METRIC</b>
NNYMG0800P2
NNYMG1000P2
NNYMG1200P2

NNYMG1600P2
NNYMZ0300P2
NNYMZ0400P2
NNYMZ0500P2
NNYMZ0500P4
NNYMZ0600P2
NNYMZ0600P4
NNYMZ0800P2
NNYMZ0800P4
NNYMZ1000P2
NNYMZ1200P2
NNYMZ1400P2
NNYMZ1600P2
NNYMZ2000P2
NNYMZ2400P2
NNYMZ3000P2
NNYMZ3600P2
<b>NYLOC NUT SS304/316</b>
NNYC40600N2
NNYC40800N2
NNYC61000N2
NNYM40300N2
NNYM40400N2
NNYM40500N2
NNYM40600N2
NNYM40800N2
NNYM41000N2
NNYM41200N2
NNYM41600N2
NNYM42000N2
NNYM60400N2
NNYM60500N2
NNYM60500N4
NNYM60600N2
NNYM60600N4
NNYM60800N2
NNYM60800N4
NNYM61000N2
NNYM61200N2
NNYM61400N2
NNYM61600N2
NNYM62000N2

<b>WING NUT SS316</b>
-----------------------

NWIM60600N2
-------------

NWIM60800N2
-------------

NWIM61000N2
-------------





Build it better with  
**BREMICK®**

**Bremick NZ Ltd**

Unit F / 373 Neilson Street Penrose, Auckland,  
New Zealand, 1061  
[www.bremick.co.nz](http://www.bremick.co.nz)  
[nthnzsales@bremick.co.nz](mailto:nthnzsales@bremick.co.nz)  
Toll Free: 0800 658 075  
NZBN: 9429034886243

---

Whilst every care was taken in the preparation of this publication, Bremick® accepts no responsibility for the accuracy of the information supplied. Bremick® reserves the right to make alterations to product specifications as part of ongoing product development and improvement. This publication serves as a guide and it's the responsibility of the end user to ensure product suitability for their application. The contents of this publication are the exclusive copyright of Bremick® and may not be reproduced without permission.